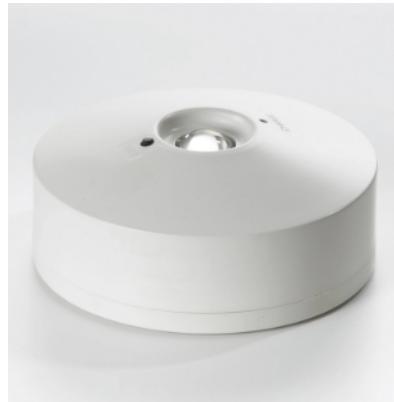


HISENS

HS-L114MN

Emergency Lights



SPECIFICATIONS

Wattage: 2.5W	Input Voltage: 240V
Frequency: 50/60Hz	Indicator: Green LED Indicates Charging
Duration Time: More than 3 Hours	Battery: Nickel-Cadmium Battery 3.6V/0.6Ah
Length/Dia (mm): 120mm	Height (mm): 50mm
Construction: ABS Casing	Working temperature: -10-55°C
IP Rating: IP20	Lumen: 100lm
Mounting Type: Surface Mount	LED Type: SMD LED Chip
Brand: Hisens	Warranty: 2 Years

