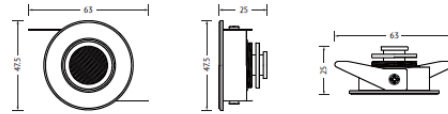
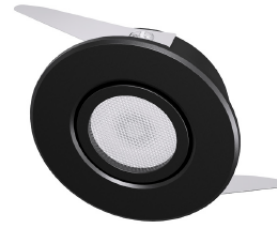


HISENS

HS-TR1061

Downlight&Spotlight



SPECIFICATIONS

Wattage: 3W	Input Voltage: 220V / 12V
Dia (N2): 47.5mm	Cut Out(N2): 40mm
CCT: 3000K / 4000K / 6000K	IP Rating: IP20
Beam Angle: 15deg / 25deg / 45deg	Body Color: Black / Silver / Gold
Spotlight Type: small/mini spotlight	Mounting Type: Recessed
Brand: Hisens	Warranty: 3 Years
Body Material: Aluminium	