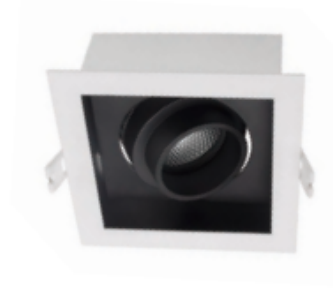


HISENS

HSDL416-10

Downlight&Spotlight



SPECIFICATIONS

Wattage: 10W	Input Voltage: 240V
Length(N2): 120mm	Width(N2): 120mm
Height(N2): 85mm	Cut Out(N2): 100mm
CCT: 3000K	Lumen: 640lm
Beam Angle: 24deg	Body Color: White
Cut Out Width(N2): 100mm	Spotlight Type: Square spotlight
CRI: 90+	Mounting Type: Recessed
LED Type: COB LED Chip	Brand: Hisens
Warranty: 5 Years	Body Material: Iron+Aluminium

