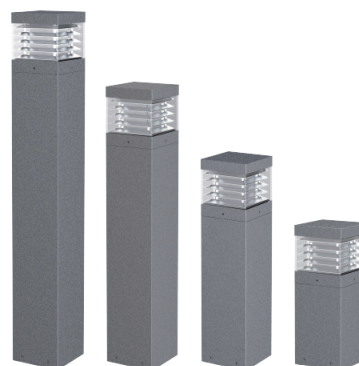


HISENS

HSDLW-LED-064-LOUVER-BOLLARD LIGHT

Bollard Lights



SPECIFICATIONS

Wattage: 10W / 15W / 20W / 25W / 30W	Input Voltage: 220V
Frequency: 50/60Hz	Width(N2): 150mm
Height(N2): 400mm / 600mm / 800mm	CCT: 2700K-6500K
IP Rating: IP65	Lumen: 500lm / 750lm / 1000lm / 1250lm / 1500lm
Body Color: Black / Silver	IK Rating: 8
LED Type: COB LED Chip	Color Rendering Index: 80Ra
Warranty: 5 Years	Body Material: Die Cast Aluminium

